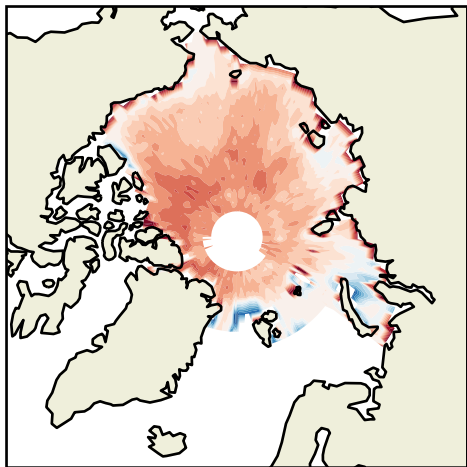


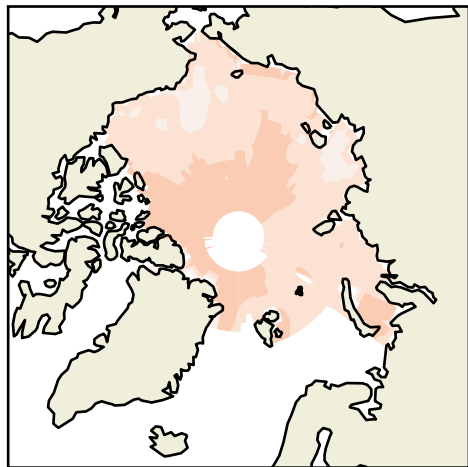
(a)



-0.9 -0.6 -0.3 0.0 0.3 0.6 0.9

Melting surface fraction bias (1)

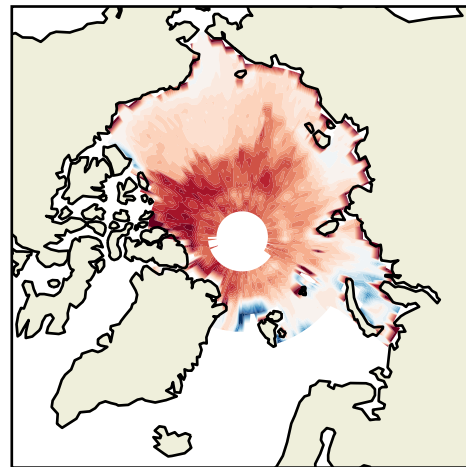
(b)



-180 -120 -60 0 60 120 180

$d(F_{sfc})/d(\text{melting surface frac.})(W m^{-2})$

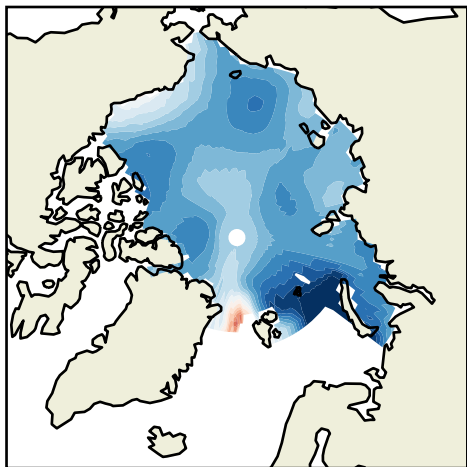
(c)



-24 -16 -8 0 8 16 24

Induced surface flux bias ($W m^{-2}$)

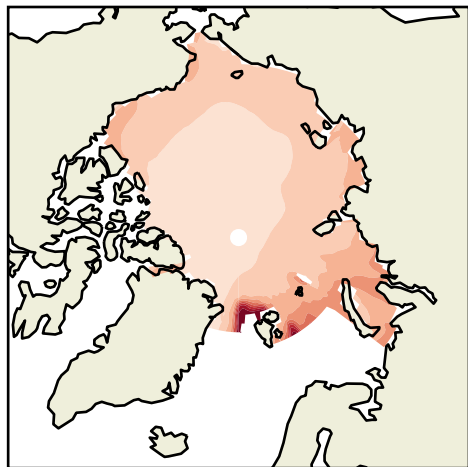
(d)



-45 -30 -15 0 15 30 45

Downwelling LW bias ($W m^{-2}$)

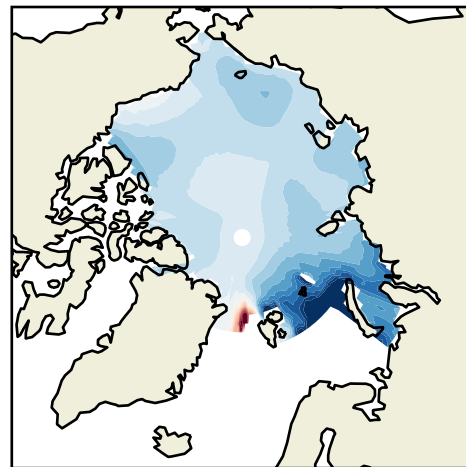
(e)



-0.9 -0.6 -0.3 0.0 0.3 0.6 0.9

$d(F_{sfc})/d(\text{downwelling LW})(1)$

(f)



-18 -12 -6 0 6 12 18

Induced surface flux bias ($W m^{-2}$)