

Supplement of The Cryosphere, 13, 911–925, 2019
<https://doi.org/10.5194/tc-13-911-2019-supplement>
© Author(s) 2019. This work is distributed under
the Creative Commons Attribution 4.0 License.



Supplement of

Large spatial variations in the flux balance along the front of a Greenland tidewater glacier

T. J. W. Wagner et al.

Correspondence to: Till J. W. Wagner (wagnert@uncw.edu)

The copyright of individual parts of the supplement might differ from the CC BY 4.0 License.



Figure 1. Locations of bathymetry readings used to create map in Fig 1b. Blue dots are new data added for this study, while black dots were first presented in Stevens et al (2016), and are also used for the BedMachine3 data product (Morlighem et al, 2017). The red line is the glacier front on 9 July 2013.

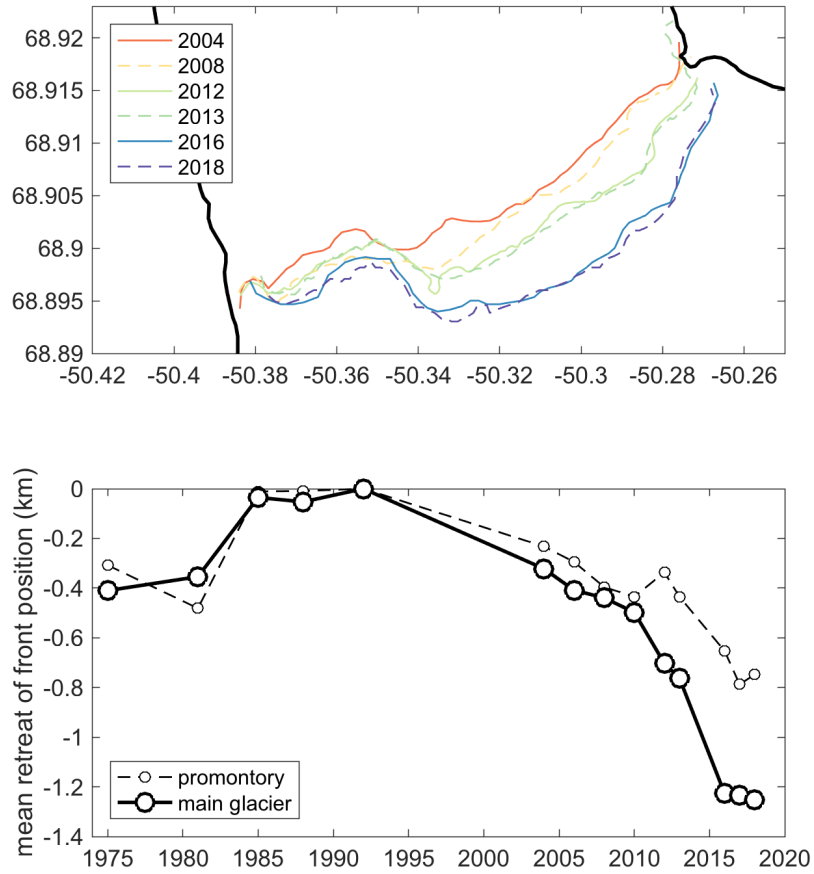


Figure 2. Longterm retreat of the Saqqarliup glacier front. While only six profiles from years between 2004 and 2018 are shown in panel (a) for clarity, panel (b) gives the evolution of the mean front position since 1975.